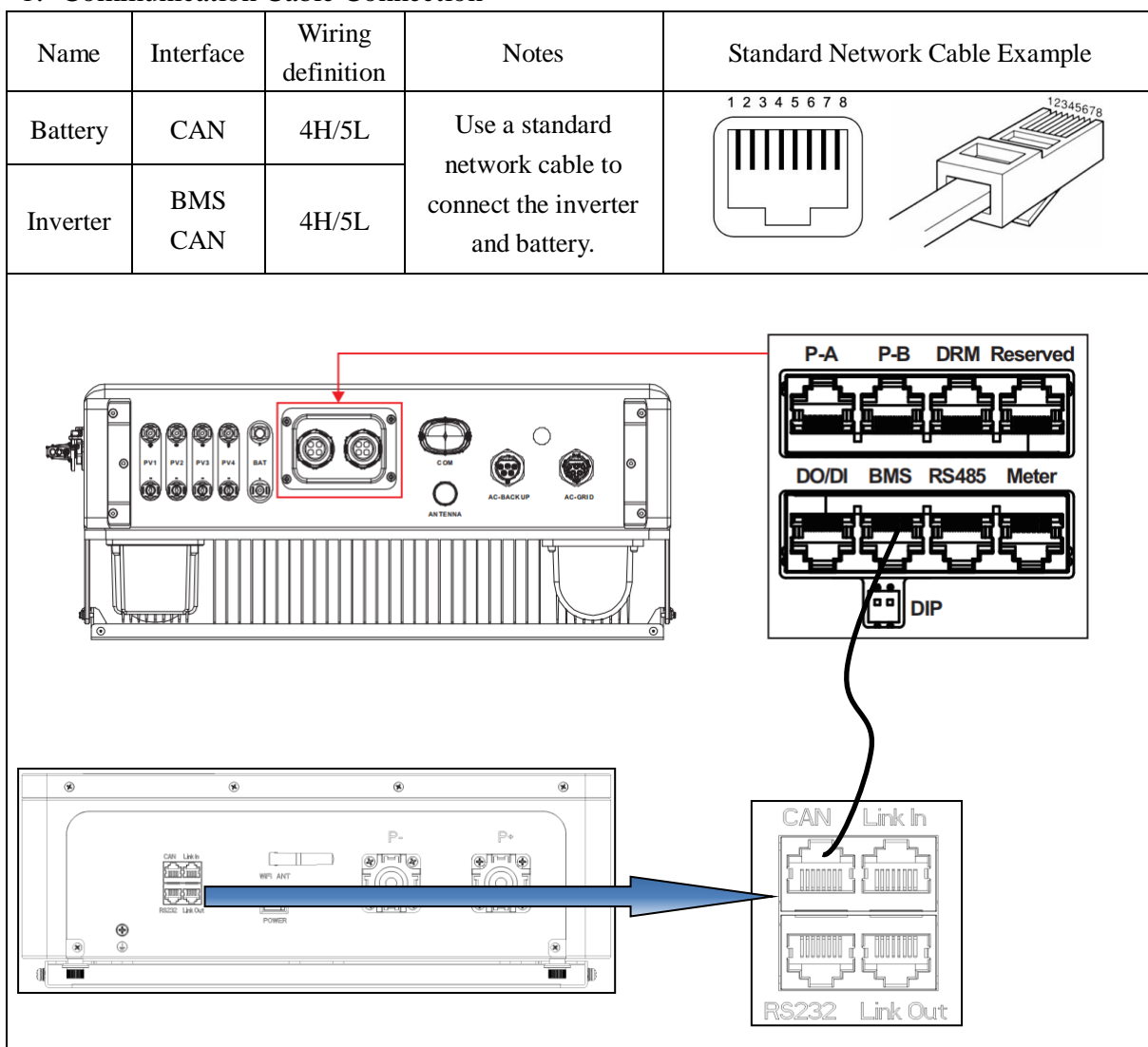


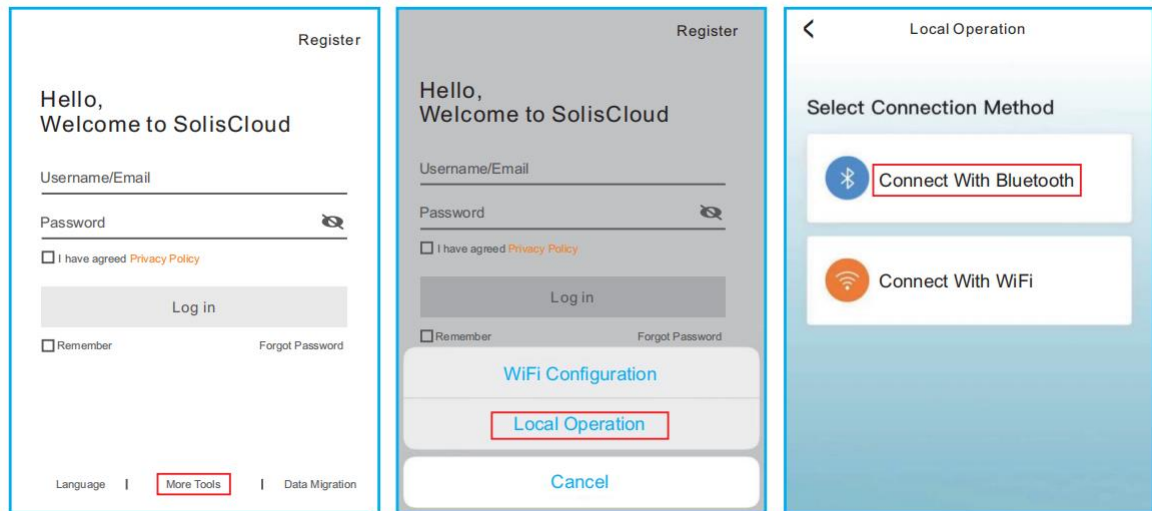
# Solis Low Voltage System Quick Connection Guide

## 1: Communication Cable Connection



## 2: Single System Inverter Setup Instructions

**1、 After completing the connection, use Local Operation mode to connect to the inverter's Bluetooth.**

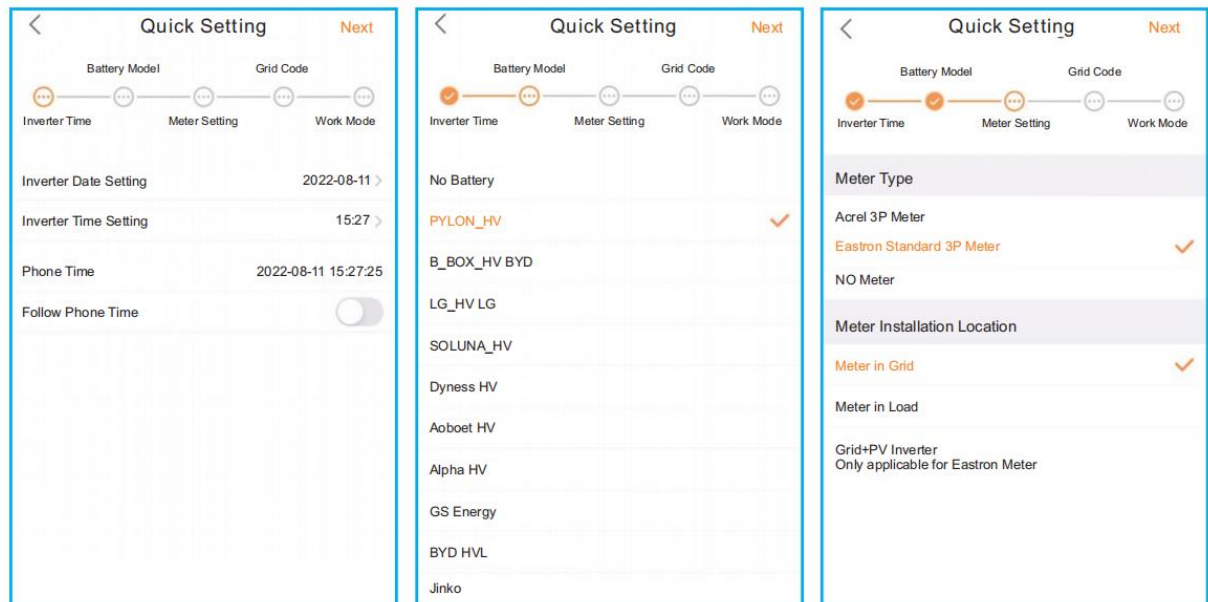


**2、 After the first login, initialization settings are required.**

Step 1: Set the inverter date and time. You can set it to follow the time on your phone.

Step 2: Set the Battery Model to PYLON\_HV.

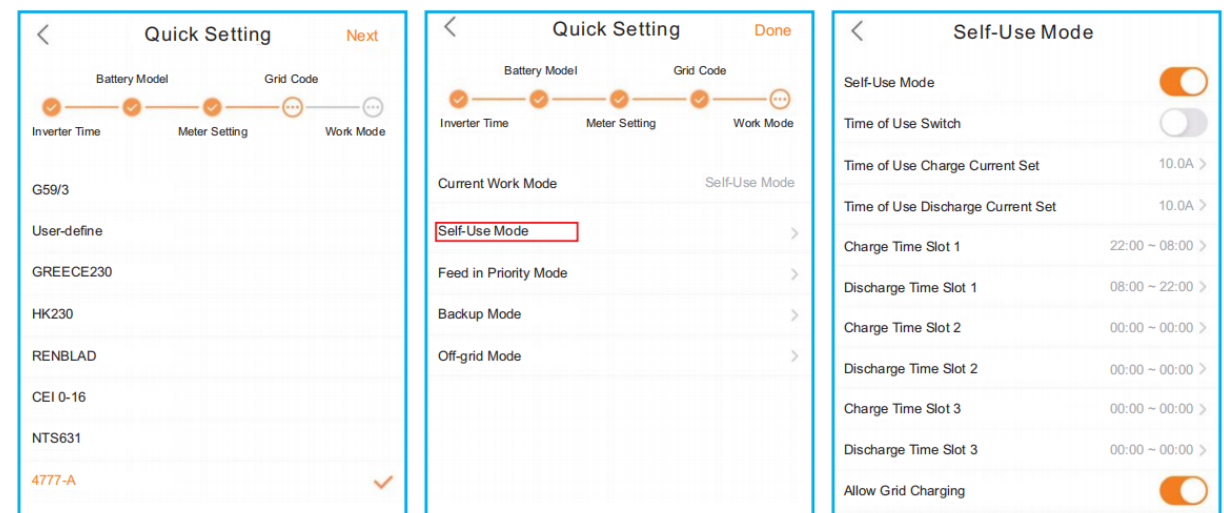
Step 3: Set the Meter Setting, which must be based on the actual meter type connected to the inverter. If no meter is connected temporarily, select "No Meter" to avoid alarms. It is recommended to install the meter at the system's grid connection point and select "Grid Meter". Quickly set the inverter timer settings as working mode.



3、 Step 1: Set the Grid Code settings, please select the corresponding grid code according to local grid requirements.

Step 2: Set the Work Mode settings, it is recommended to set to "Self-Use Mode". This mode maximizes the use of photovoltaic power for household electricity or stores it in the battery for household use. If manual control of battery charging and discharging time is needed, use the time switch and the following settings.

Step 3: It is recommended to turn on "Allow Grid Charging" (if turned off, the inverter will not force the battery to charge, and the battery may enter sleep mode).



### 3: Battery Parallel Connection

