



MOUNTING BRACKET SOLUTIONS



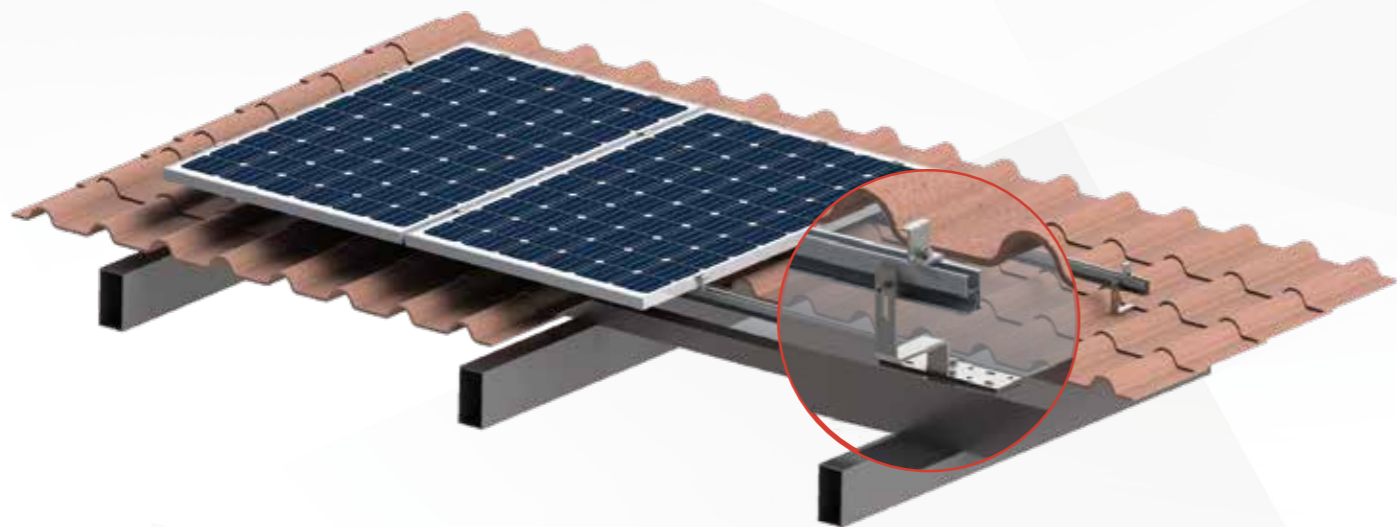
PAK TIANMA ENTERPRISES(PVT.)LIMITED
GM ALNOOR FILING STATION, LANDIKOTAL ROAD,
ALI MASJID KHYBER, JAMRUD PESHAWAR KPK PAKISTAN

E Ishfaq_waziri@yahoo.com **T** +92 334 5926726
W www.Apexsolar.pk **W** apex-solarenergy.com

Headquarter: GM Solar Pvt Ltd In Pakistan Land line:051-5495148

10-year local warranty

| Tile Roof Mount



Design Conditions

Application Area:	Pantile Roof
Module Type:	Framed/Frameless
Module Orientation:	Portrait/Landscape
Main Material:	Anodized AL6005-T5
Fasteners:	SUS304/410
Features:	Adjustable & Easy installation
Warranty:	10 Years Warranty and 25 Years Service Life



Adjustable Roof Hook



Roof Hook



Mid Clamp



End Clamp



Rail



Rail Splice

| SS Flat Hook + Square Rail



SS Flat Hook



Square Rail



Mid Clamp



End clamp

Introduction

This adjustable hook can be adjusted up and down, left and right to avoid interference with the tile.

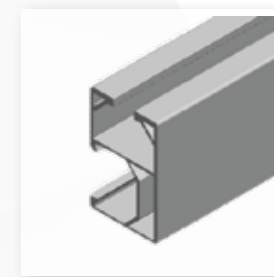
- ✓ Adjustable in horizontal and vertical directions
- ✓ Easy to install
- ✓ Highly pre-assembled
- ✓ Lightweight

Introduction

This adjustable hook is made of more corrosion-resistant and environmentally friendly aluminum alloy. The bottom adopts a channel adjustment design that is more flexible than single-point adjustment. It can be adjusted up and down, left and right to avoid interference with the tile.



Aluminum Hook



G Rail



Mid Clamp



End clamp

▲ Aluminum Hook + G Rail

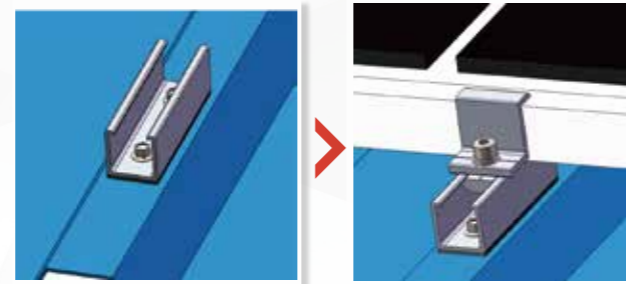
| Railless Roof Mount



← Railless Roof Mount - Landscape

Design Conditions

Application Area:	Trapezoidal, Sandwich Roof
Module Type:	Framed/Frameless
Main Material:	Anodized AL6005-T5
Fasteners:	SUS304/410
Features:	Easy & Fast installation
Warranty:	10 Years Warranty and 25 Years Service Life



Mini Rail



End Clamp



Mid Clamp

| Railless Roof Mount-Portrait



Mini rail



Mid Clamp



End Clamp

Introduction

This one is especially suitable for sandwich roof. We upgrade this mini rail by designing the opening shape adaptable to snap-on clamps, when fastening the panels we only need to press the clamp which ensures the rapid installation and reduces labor cost. It spans two ridges and positioned vertical to the water flow direction. The panels are placed in portrait orientation so as to be clamped on the long side. The mid and end clamp are available in black anodized.

- ✓ Low cost
- ✓ Easy to install
- ✓ Highly pre-assembled
- ✓ Lightweight

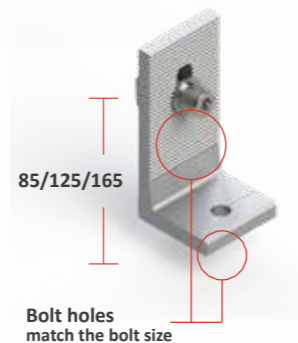
Hanger Bolt Mount



End Clamp

Design Conditions

Application Area:	Fibre Cement, Corrugated Roof
Module Type:	Framed
Module Orientation:	Portrait/Landscape
Main Material:	Anodized AL6005-T5
Fasteners:	SUS304/410
Features:	Adjustable & Easy installation
Warranty:	10 Years Warranty and 25 Years Service Life



Mid Clamp

▶ Screw Option ◀

▶ Optional Heights ◀

Hook Options



SS Hook 1



SS Hook 2



SS Hook 3



SS Hook 4



SS Hook 5



SS Hook 6



SS Hook 7



Aluminum Hook

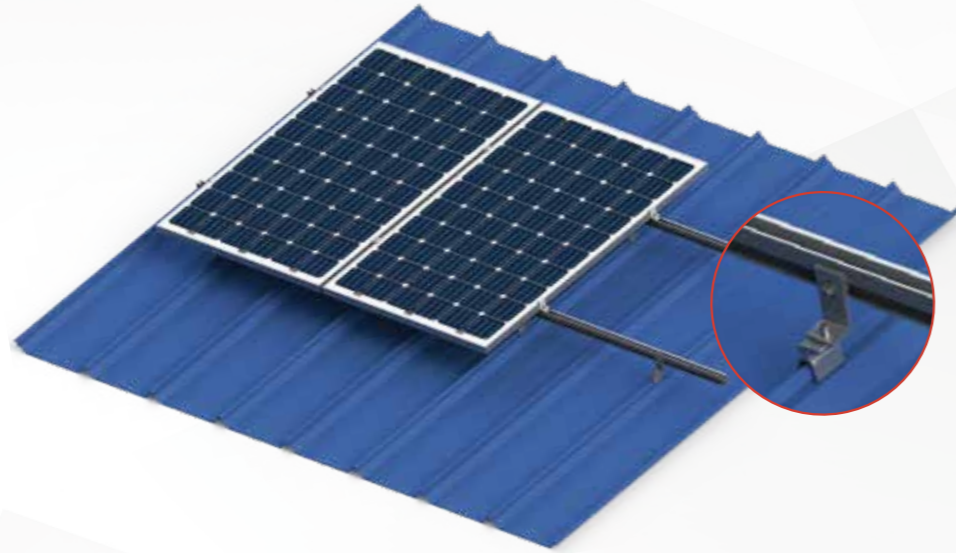


Hanger Bolt with SS Plate



Hanger Bolt (L Foot)

| Standing Seam Roof Mount



Design Conditions

Application Area:	Standing Seam Metal
Module Type:	Framed
Module Orientation:	Portrait
Main Material:	Anodized AL6005-T5
Fasteners:	SUS304/410
Features:	Non-penetrating & Easy installation
Warranty:	10 Years Warranty and 25 Years Service Life



L-Foot



Standing Seam Clamp



Rail



Rail Splice

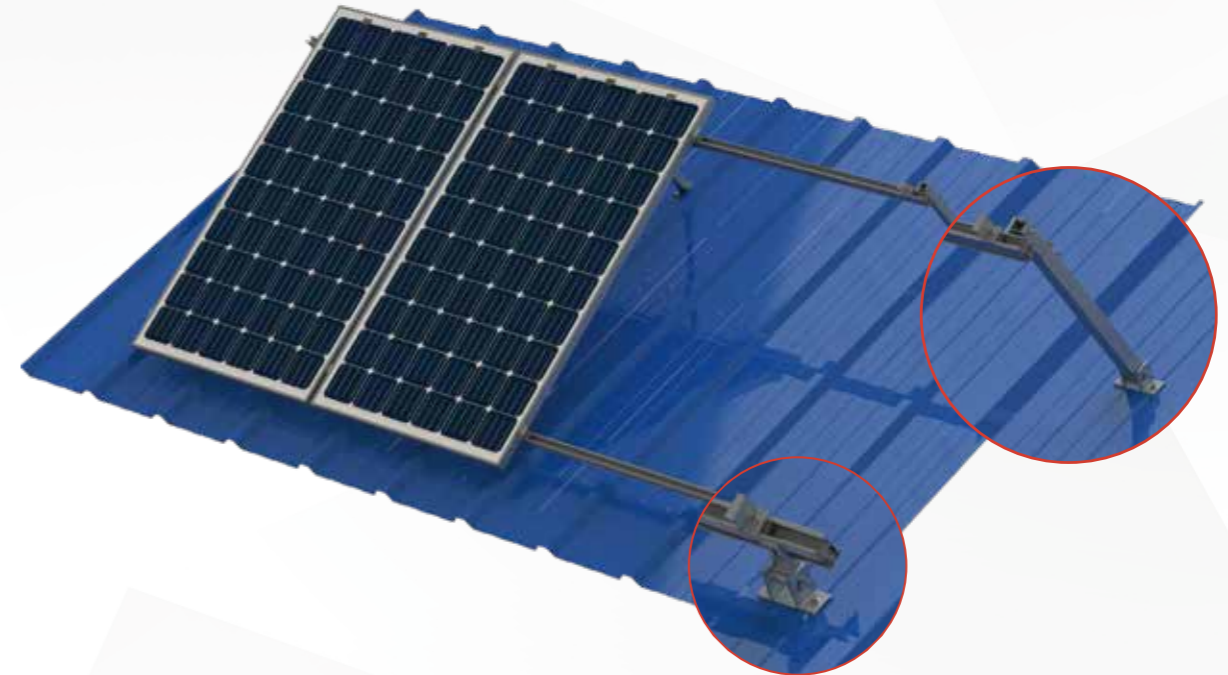


End Clamp



Mid Clamp

| Tilt Mount



Design Conditions

Application Area:	Metal Deck, Flat Concrete Roof, On-wall
Module Type:	Framed
Module Orientation:	Portrait/Landscape
Main Material:	Anodized AL6005-T5
Fasteners:	SUS304
Features:	Flexible tilt & direction
Warranty:	10 Years Warranty and 25 Years Service Life

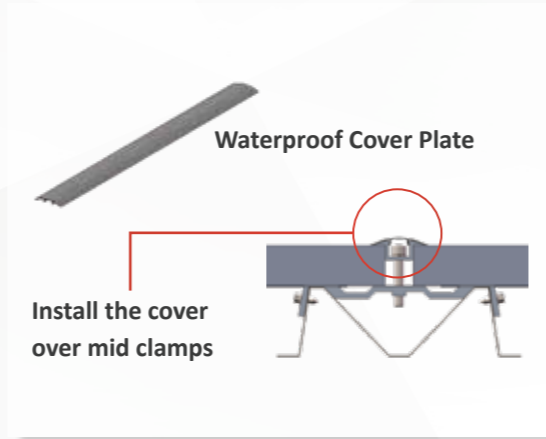


Front Leg



Rear Leg

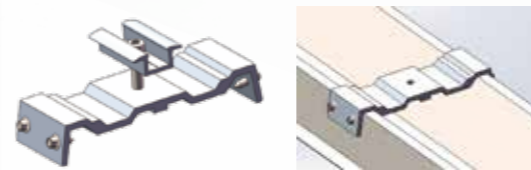
| Steel Carport



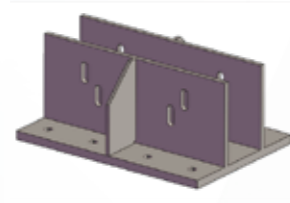
Design Conditions

Application Area:	Parking lots
Module Type:	Framed
Module Orientation:	Portrait/Landscape
Main Material:	Q235B/S350GD
Fasteners:	SUS304/410
Water-proof:	Optional
Features:	Easy transportation & Cost-effective
Warranty:	10 Years Warranty and 25 Years Service Life

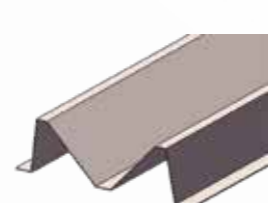
Clamp with fixing plate on water channel



Beam/Column/Purlin



Welded Base Plate

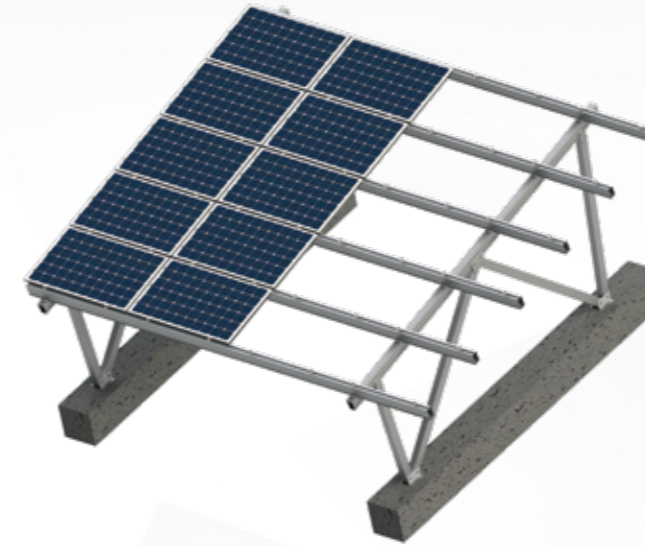


Vertical Water Channel

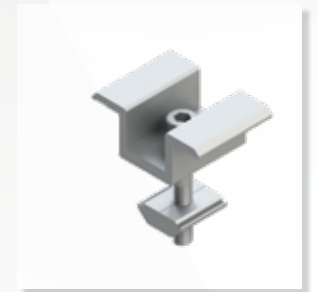


Tie Bar

| Aluminum Carport



End Clamp



Mid Clamp

Design Conditions

Application Area:	Parking lots
Module Type:	Framed
Module Orientation:	Portrait/Landscape
Main Material:	Anodized AL6005-T5
Fasteners:	SUS304/410
Water-proof:	Optional
Features:	Light wight & Easy installation
Warranty:	10 Years Warranty and 25 Years Service Life



Base Connector



Column



Rail-Portrait



Beam

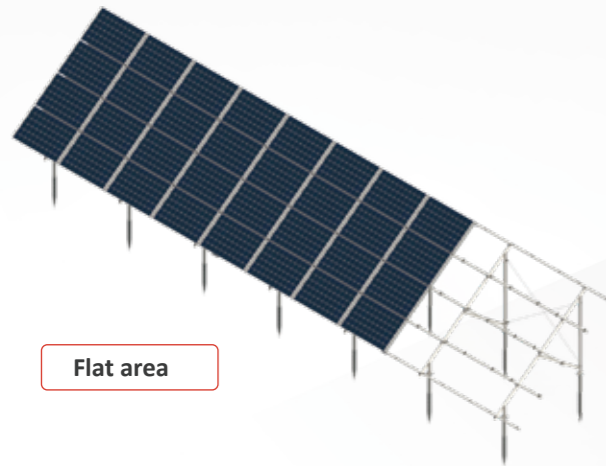


Small H Connector

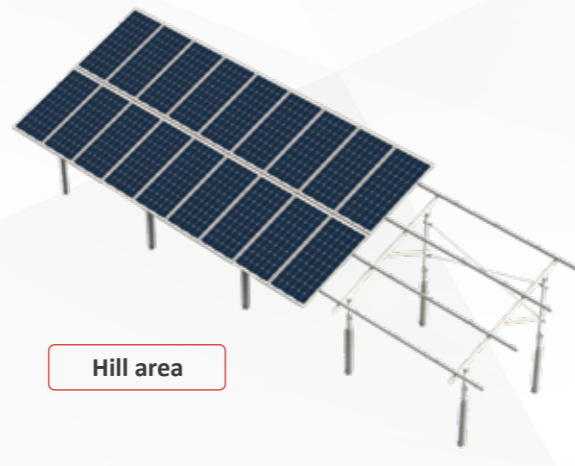


Big H Connector

| C Steel Mount



Flat area



Hill area

Design Conditions

Application Area:	Open Ground
Module Type:	Framed
Module Orientation:	Portrait/Landscape
Main Material:	Q235B/S350GD
Fasteners:	Steel, SUS304
Features:	Cost-effective & Easy installation
Warranty:	10 Years Warranty and 25 Years Service Life



C-section Steel



Purlin Connector



End Clamp Kits



L Foot Connector



Ground Screw



Mid Clamp Kits

Design Conditions

Application Area:	RCC Roof or Open Ground
Application Area:	Concrete or Ground Screw
Module Type:	Framed
Module Orientation:	Portrait/Landscape
Main Material:	Q235B/S350GD
Fasteners:	Steel, SUS304
Features:	Flexible application & Cost-effective
Warranty:	10 Years Warranty and 25 Years Service Life



U-section Steel



Triangle Connector



Base Connector



Purlin Connector

| U Steel Mount



End Clamp



Mid Clamp

Aluminum Mount



Design Conditions

Application Area:	Open Ground
Foundation:	Concrete or Ground Screw
Module Type:	Framed
Module Orientation:	Portrait/Landscape
Main Material:	Anodized AL6005-T5
Fasteners:	SUS304
Features:	Light weight & Recyclable
Warranty:	10 Years Warranty and 25 Years Service Life



End Clamp



Mid Clamp



Rail Clamp



Rail-Landscape



Base Connector



Rail Splice



Beam



Column

Accessories



Ground Screw

Dimension:	76*T3/3.5
Flange Diameter:	200mm
Length:	1200/1400/1600/1800/2000mm
Material:	HDG Q235B
	·customization available·

PV Cable Clip



2*4mmsq



4*6mmsq

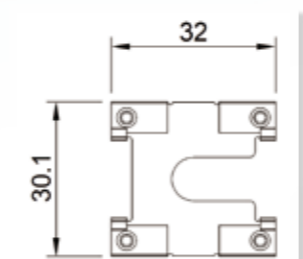


4*4mmsq

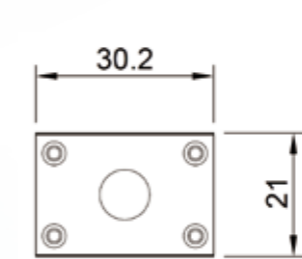


Grounding Lug

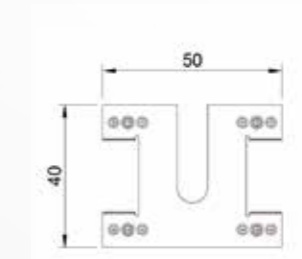
Grounding Clip



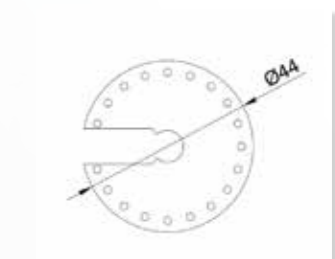
EG-GC-01



EG-GC-03



EG-GC-07



EG-GC-08

| Global Projects



30MW Ground



50MW Ground



1.8MW Rooftop



120MW Fishery



2MW Carport



5MW Rooftop



5MW Rooftop



5MW Rooftop



2MW Rooftop